

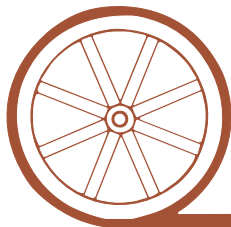
LAND FOR SALE

Perkins County Dryland



- Location:** 1 mile west of Grafton on Hwy 23 & then 3/4 of a mile south on County Road 350.
- Legal Description:** NE1/4 Section 28-T10N-R35W of the 6th P.M., Perkins County, NE.
- Acres:** 157.95 Tax Assessed Acres
- Taxes:** 2009 Taxes Payable in 2010 - \$866.36
- Cropland & FSA Info:** 157 acres cropland - Farm #585 - 87.9 Ac Wheat Base at 35 Bu Yield; 13.4 Ac Grain Sorghum Base at 39 Bu Yield.
- Soils:** Cropland consists of Ulysess - Sulco, Keith & McCook silt loams.
- Price:** \$114,000 Cash
- Comments:** This property has just come out of CRP and Buyer will have immediate possession to plant corn or whatever crop he chooses to plant this spring.
- Contact:** **Mike Polk - Listing Agent 308-539-4446 or email mike@agriaffiliates.com**
Loren Johnson, Duane McClain, Bruce Dodson or Jerry Weaver

Offered Exclusively By:



AGRI AFFILIATES, INC.

...Providing Farm - Ranch Real Estate Services...

NORTH PLATTE OFFICE

P.O. Box 1166

I-80 & US Hwy 83

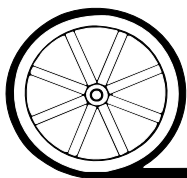
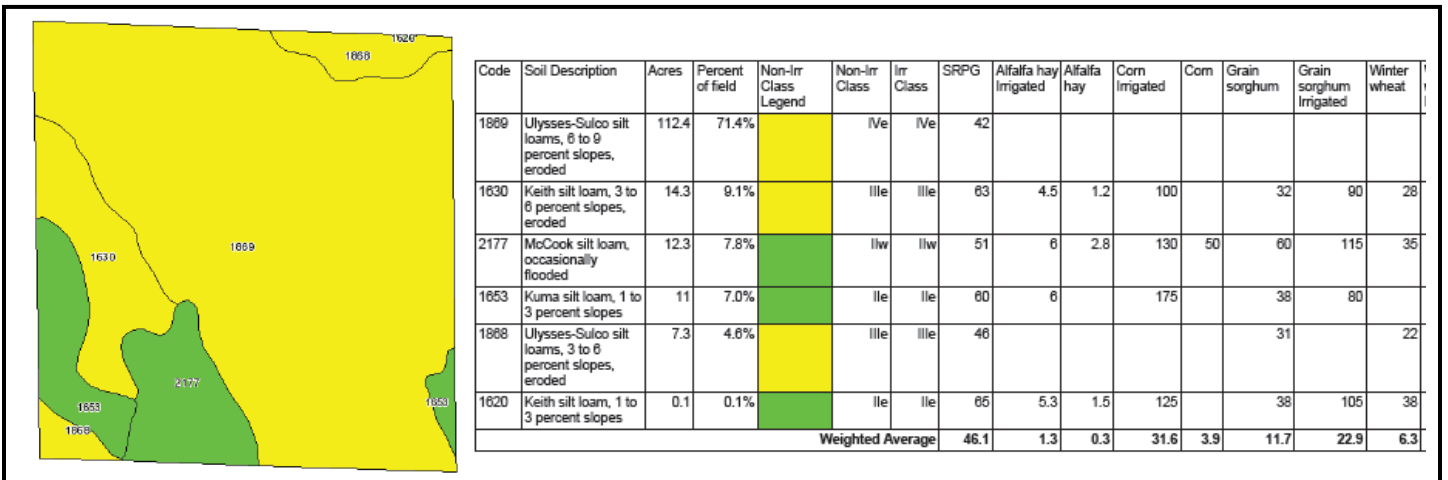
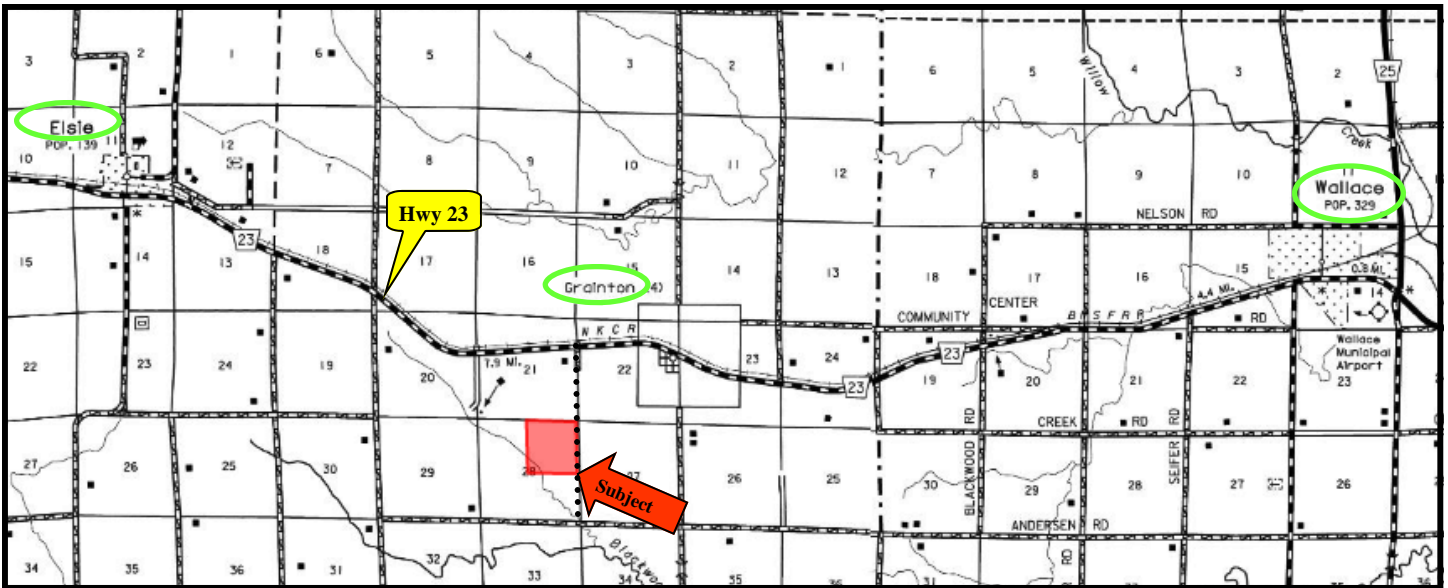
North Platte, NE 69103

www.agriaffiliates.com

(308) 534-9240

Telecopier (308) 534-9244

Information contained herein was obtained from sources deemed reliable. We have no reason to doubt the accuracy, but we do not guarantee it. Prospective Buyers should verify all information, including items of income and expense. All maps provided by Agri Affiliates, Inc. are approximations only, to be used as a general guideline, and not intended as survey accurate.



AGRI AFFILIATES, INC.
...Providing Farm - Ranch Real Estate Services...

All maps provided by Agri Affiliates, Inc. are approximations only, to be used as a general guideline, and not intended as survey accurate.