

# LAND FOR SALE

**Western Logan  
County Acreage**

View our Current Listings  
[HERE!](#)

**Location:** West of Stapleton, NE about  
9.5 miles on Highway 92.

**Legal  
Description:** Surveyed tract in SWSE1/4  
Section 31-T18N-R29W of  
the 6th PM, Logan County.

**Acres:** 17.17 acres

**Taxes:** 2008 taxes are \$843.06



**Improvements:** This property includes 2 homes. The west home pictured above is a 1,368 sq. ft. home built in 1930. It has 3 bedrooms and one bath. There is an attached garage. The east home pictured below was built in 1910 and has 1,644 sq. ft. also has 3 bedrooms and 1 bath. There is a 72'x32' Quonset building, an older milking barn and other out buildings.

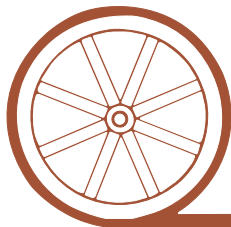


**Price:** \$150,000

**Comments:** This is a rare opportunity in the area. Located just off the highway there is great access. There is a little clean up involved but it could be great home.

**Contact:** Duane McClain, Listing agent at  
308.530.0221 or [duane@agriaffiliates.com](mailto:duane@agriaffiliates.com)  
Mike Polk, Loren Johnson, Bruce Dodson or  
Jerry Weaver @ 308.534.9240

*Offered Exclusively By:*



## AGRI AFFILIATES, INC.

*...Providing Farm - Ranch Real Estate Services...*

**NORTH PLATTE OFFICE**

P.O. Box 1166

I-80 & US Hwy 83

North Platte, NE 69103

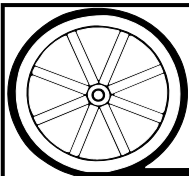
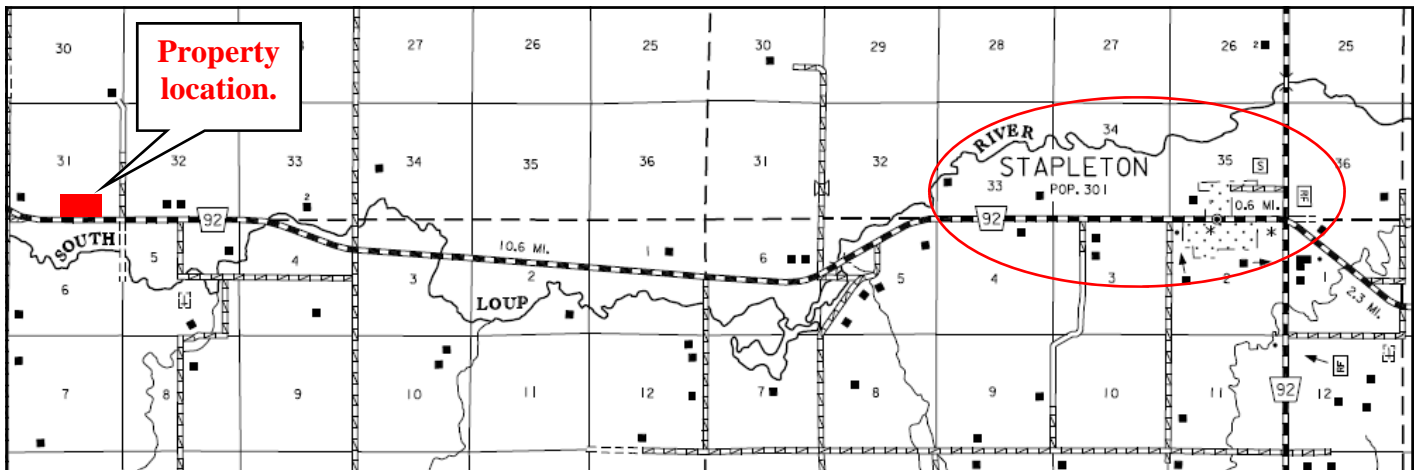
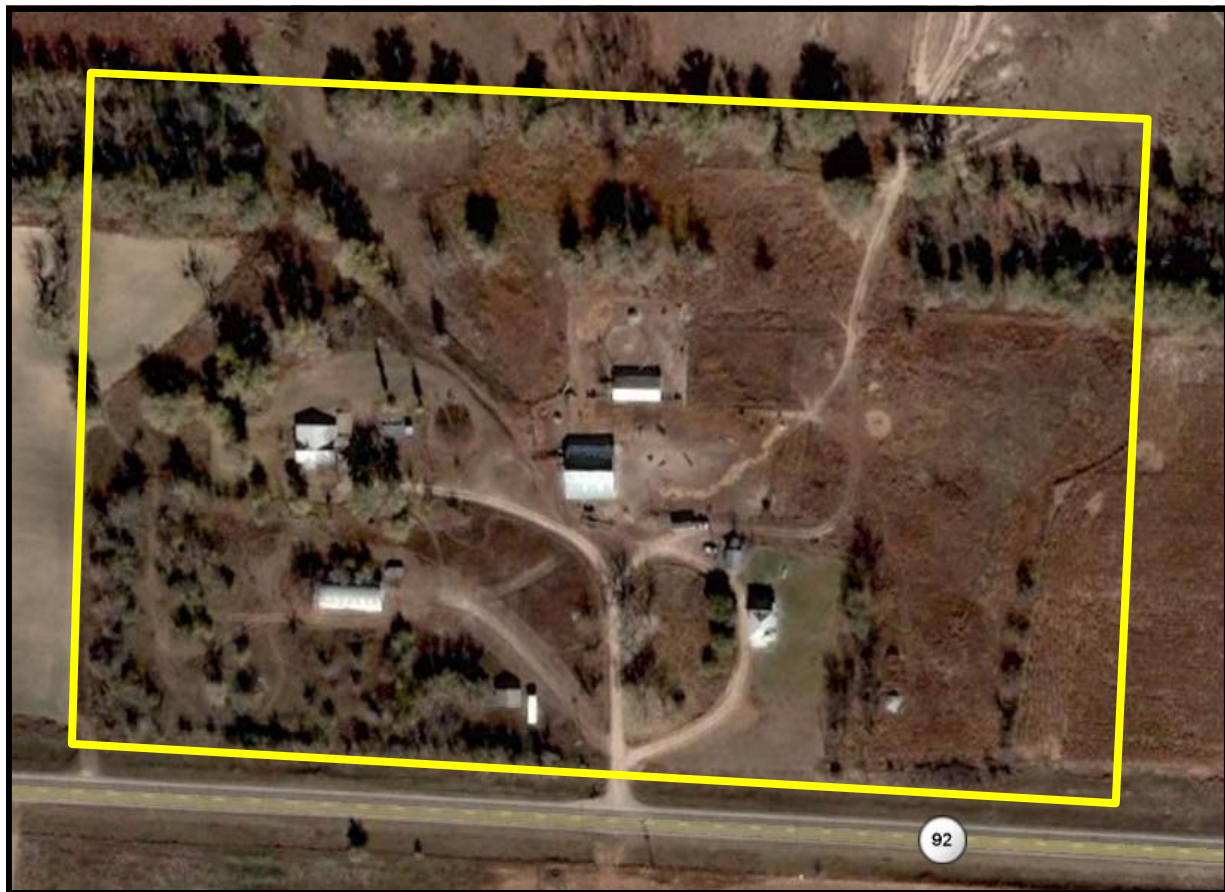
[www.agriaffiliates.com](http://www.agriaffiliates.com)

**(308) 534-9240**

Telecopier (308) 534-9244

Information contained herein was obtained from sources deemed reliable. We have no reason to doubt the accuracy, but we do not guarantee it. Prospective Buyers should verify all information, including items of income and expense. All maps provided by Agri Affiliates, Inc. are approximations only, to be used as a general guideline, and not intended as survey accurate.

# Aerial Photo and location map of Western Logan County Acreage



**AGRI AFFILIATES, INC.**

*... Providing Farm - Ranch Real Estate Services. ...*

All maps provided by Agri Affiliates, Inc. are approximations only, to be used as a general guideline, and not intended as survey accurate.