

LAND FOR SALE

THIESING RANGE PARCEL #1

SOLD

View our Current Listings
[HERE!](#)

Location: From the Brady, Nebraska I-80 interchange, go 1 mile south to Fort McPherson Road, then 5 miles west to Snell Canyon Road, then 1 1/2 miles south. (Access is obtained across a canal bridge to the northeast corner of the parcel)

Legal Description: All of Section 35-T12N-R28W of the 6th P.M., Lincoln County, Nebraska.

Acreage: Lincoln County Assessor indicates a total of 640.0 acres. Farm consists entirely of canyon rangeland.

Livestock

Water: Livestock water is provided by the canal at the northeast corner and a windmill located in the southeast portion of the property.

Soils: Soils consist of Coly and Coly-Hobbs silt loams, with slopes of 3-60%.

RE Taxes: 2010 - \$3,378

List Price: **\$297,000**

Comments: This is an excellent grazing unit with fencing consisting of three and four barb wire on both wood and steel posts. Range consists of mildly sloping canyons with large canyon tops and bottoms, along with cedar tree infestations which provide excellent wildlife habitat and adds to the property's recreational value.

Contact: **Bart Woodward, Listing Broker - (308) 234-4969**
Bruce Dodson, Salesman - (308) 534-9240
Bryan Danburg, Salesman - (308) 380-3488
Kent Richter, Salesman - (308) 627-6465
David J Frost, Assoc. Broker - (308) 380-8321

bart@agriaffiliates.com



Offered Exclusively By:



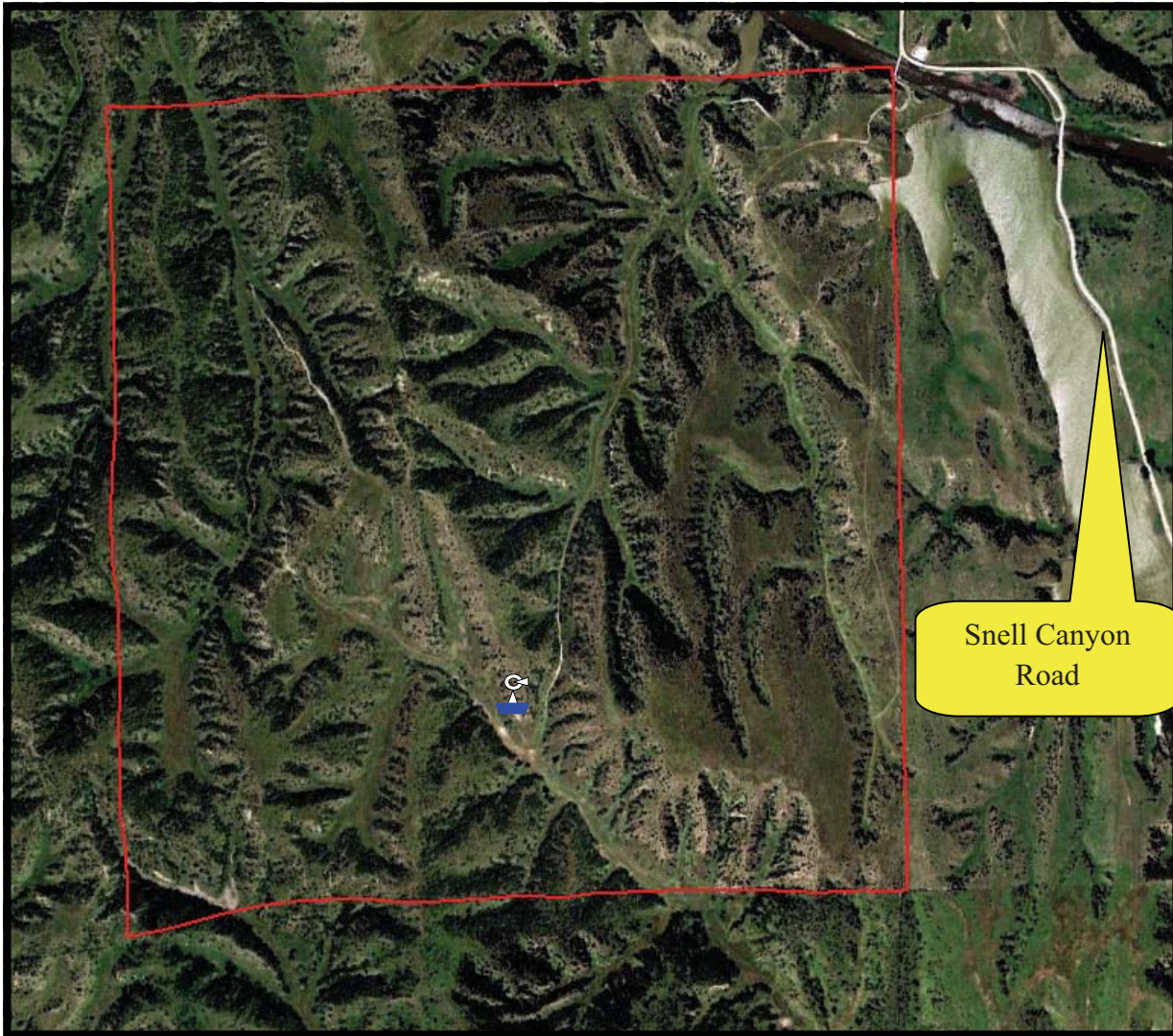
AGRI AFFILIATES, INC.

... Providing Farm - Ranch Real Estate Services...

Management · Sales · Auctions · Appraisals

KEARNEY OFFICE
P.O. Box 1390
2418 East Hwy 30
Kearney NE 68848-1390
www.agriaffiliates.com
(308) 234-4969
Fax (308) 236-9776

Information contained herein was obtained from sources deemed reliable. We have no reason to doubt the accuracy, but we do not guarantee it. Prospective Buyers should verify all information, including items of income and expenses. All maps provided by Agri Affiliates, Inc. are approximations only, to be used as a general guideline, and not intended as survey accurate.



All maps provided by Agri Affiliates, Inc. are approximations only, to be used as a general guideline, and not intended as survey accurate.

LAND FOR SALE

THIESING RANGE- PARCEL #2

SOLD

View our Current Listings
[HERE!](#)

Location: From the Brady, Nebraska I-80 interchange, go 1 mile south to Fort McPherson Road, 4 miles south on Snell Canyon Road, then approximately 1/4 mile southwest on Government Pocket Road. (Access is from the south approximately 550 feet across neighboring land to the southeast portion of the property. Property does not have legal access, only historical physical access)

Legal Description: All of Section 15-T11N-R28W of the 6th P.M., Lincoln County, Nebraska.

Acreage: Lincoln County Assessor indicates a total of 605.0 acres. Farm consists entirely of canyon rangeland.

Livestock

Water: Livestock water is provided by two wells equipped with windmills.

Soils: Soils consist of Coly and Coly-Hobbs silt loams, with slopes of 3-60%.

RE Taxes: 2010 - \$3,195

List Price: **\$257,000** **Cash**

Comments: This is good quality canyon rangeland that includes wide canyon tops and bottoms with cedar tree infestations on the canyon sides. This parcel is very conducive to livestock grazing, along with offering recreational amenity.

Contact: **Bart Woodward, Listing Broker - (308) 234-4969**
Bruce Dodson, Salesman - (308) 534-9240
Bryan Danburg, Salesman - (308) 380-3488
Kent Richter, Salesman - (308) 627-6465
David J Frost, Assoc. Broker - (308) 380-8321

bart@agriaffiliates.com



Offered Exclusively By:

AGRI AFFILIATES, INC.

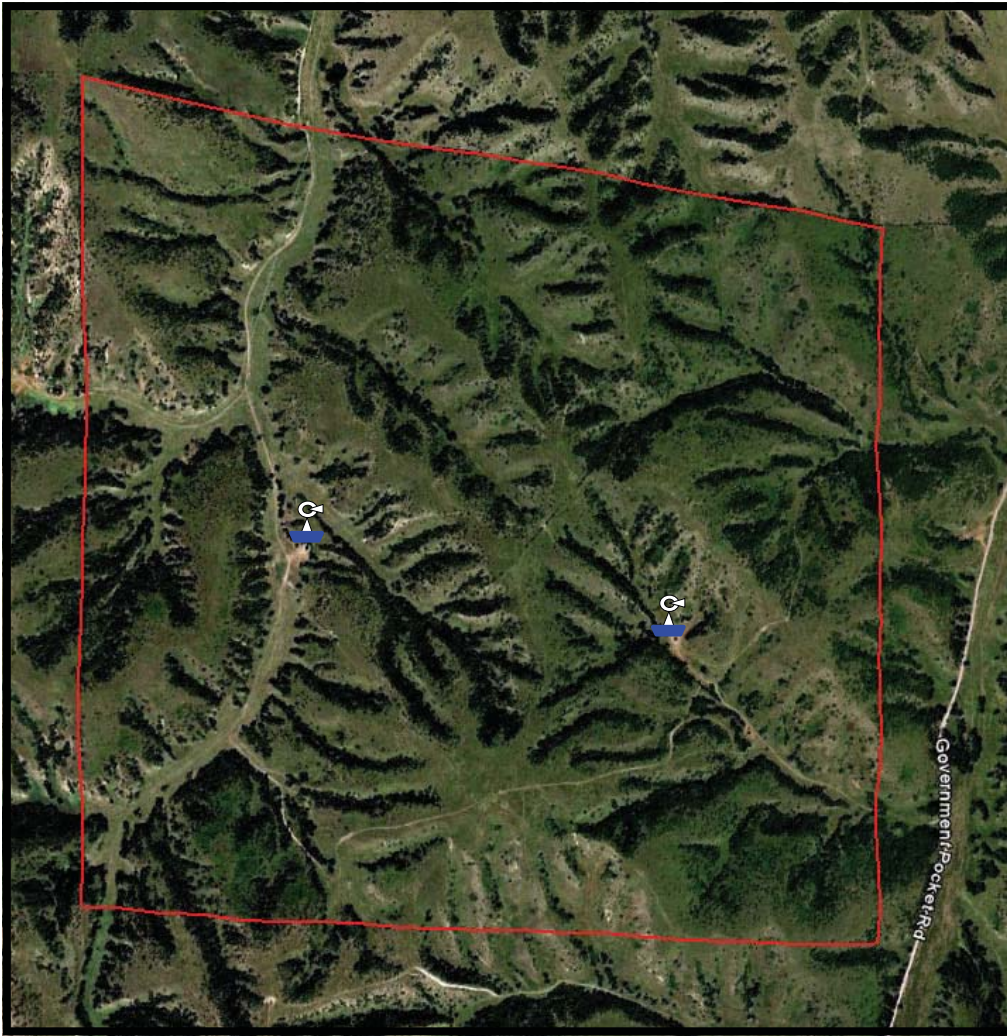
... Providing Farm - Ranch Real Estate Services. ...

Management · Sales · Auctions · Appraisals

KEARNEY OFFICE
P.O. Box 1390
2418 East Hwy 30
Kearney NE 68848-1390
www.agriaffiliates.com
(308) 234-4969
Fax (308) 236-9776

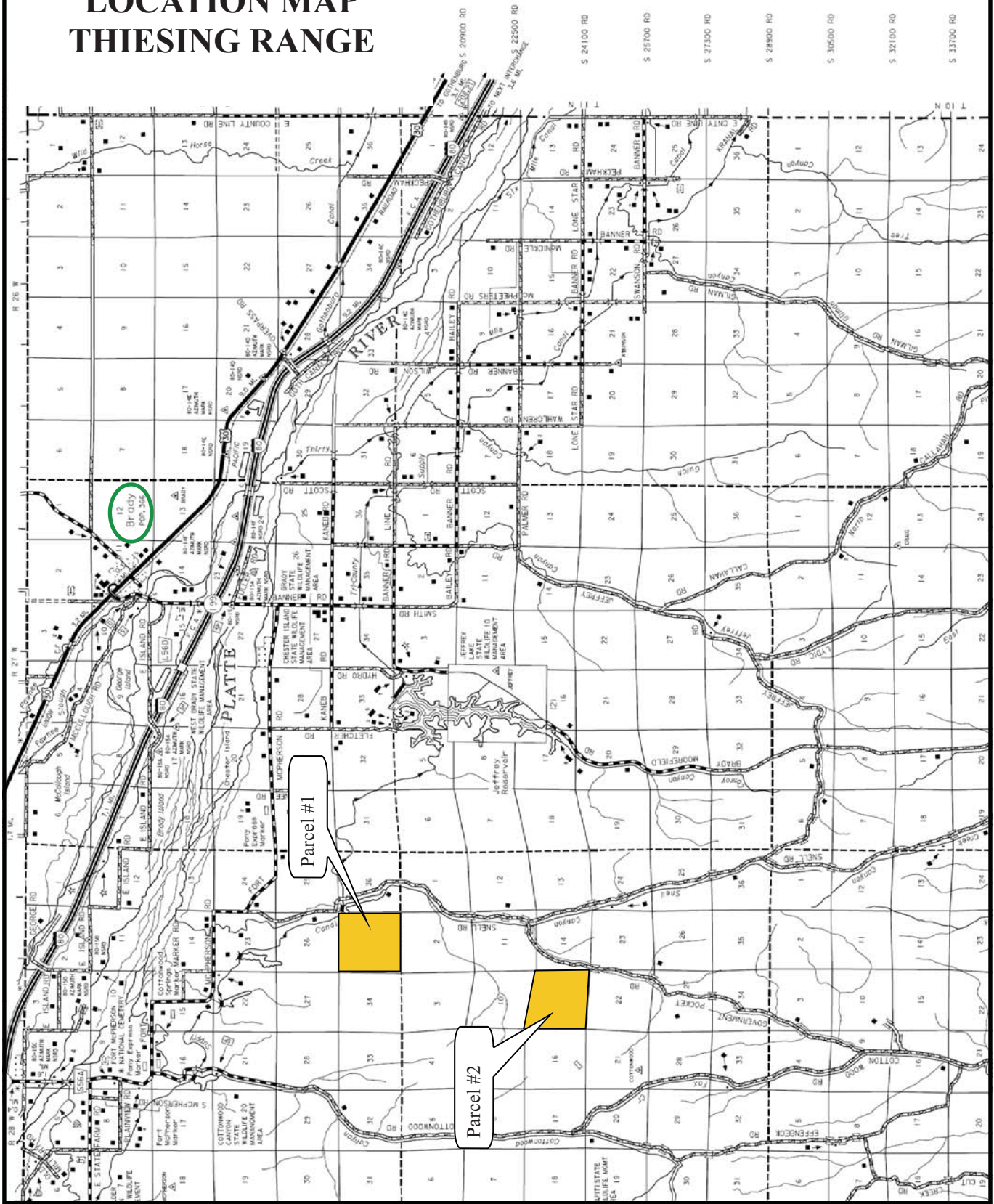
Information contained herein was obtained from sources deemed reliable. We have no reason to doubt the accuracy, but we do not guarantee it. Prospective Buyers should verify all information, including items of income and expenses. All maps provided by Agri Affiliates, Inc. are approximations only, to be used as a general guideline, and not intended as survey accurate.





All maps provided by Agri Affiliates, Inc. are approximations only, to be used as a general guideline, and not intended as survey accurate.

LOCATION MAP THIESING RANGE




AGRI AFFILIATES, INC.
 ... Providing Farm - Ranch Real Estate Services ...
www.agriaffiliates.com

All maps provided by Agri Affiliates, Inc. are approximations only, to be used as a general guideline, and not intended as survey accurate.