

# LAND FOR SALE



**SOLD**

View our [Current Listings](#) **HERE!**

## Perkins County Pasture & CRP

**Location:**

8 miles south and 1 1/2 miles west of [HERE!](#) Eainton, Nebraska at the intersection of County Roads 751 and 353 or County Line Road between Lincoln and Perkins County.

**Legal Description:**

SE1/4 Section 25-T9N-R35W of the 6th TM, Perkins County, NE.

**Acres:**

148.87 Tax Assessed Acres

**Taxes:**

2009 Real Estate Taxes Payable in 2010 - \$680.72

**Land Use:**

58.7 acres cropland currently in CRP through 2012. 90 acres pasture currently grazed in conjunction with pasture on adjacent School Land.

**FSA Info:**

Farm #4933 Tract #1503—58.7 acres in CRP through 2012 at \$1,878.00 per year.

**Soils:**

Farmland is Class IV Ulysses-Sulco silt loams. Pasture is Ulysses-Sulco silt loams also.

**Price:**

\$50,000.00 Cash

**Comments:**

Good access with county road along the east boundary. Adjacent school section comes up for lease auction in November 2010 (See Map).

**Contact:**

Mike Polk, Listing Agent - 308-539-4446 or email at [mike@agriaffiliates.com](mailto:mike@agriaffiliates.com)  
Loren Johnson, Duane McClain, Jerry Weaver, Bruce Dodson, Jerry Sloan, Roger Leuhrs

*Offered Exclusively By:*

**NORTH PLATTE OFFICE**

P.O. Box 1166

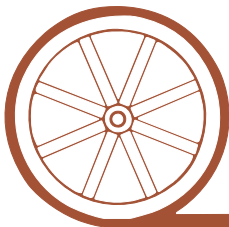
I-80 & US Hwy 83

North Platte, NE 69103

[www.agriaffiliates.com](http://www.agriaffiliates.com)

**(308) 534-9240**

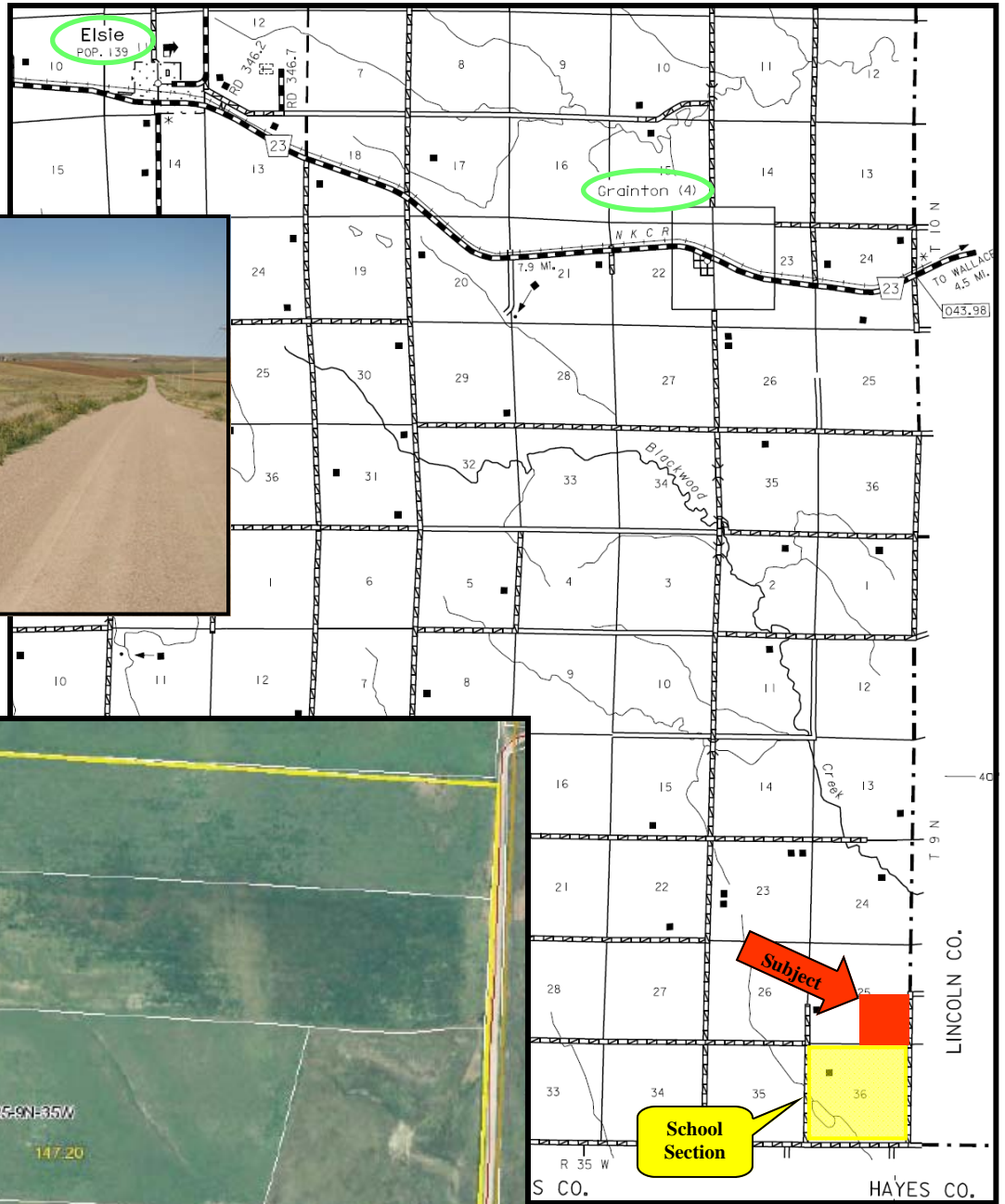
Telecopier (308) 534-9244



**AGRI AFFILIATES, INC.**

*...Providing Farm - Ranch Real Estate Services...*

Information contained herein was obtained from sources deemed reliable. We have no reason to doubt the accuracy, but we do not guarantee it. Prospective Buyers should verify all information, including items of income and expense. All maps provided by Agri Affiliates, Inc. are approximations only, to be used as a general guideline, and not intended as survey accurate.




**AGRI AFFILIATES, INC.**  
*... Providing Farm - Ranch Real Estate Services. ...*

All maps provided by Agri Affiliates, Inc. are approximations only, to be used as a general guideline, and not intended as survey accurate.