

# LAND FOR SALE

## North Platte Meadow

**SOLD**

View our Current Listings  
[HERE!](#)

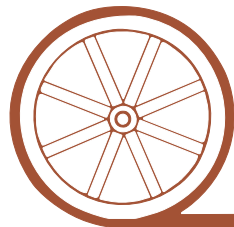


**Location:** 2 miles east of North Platte, NE on US Hwy 30 and then 1/2 mile north on North Airport Road.

**Legal Description:** NW1/4 Section 31-T14N-R29W of the 6th P.M., Lincoln County, NE.

- Acres:** 159.8 Tax Assessed Acres
- Taxes:** 2009 Taxes Payable in 2010 - \$1,852.52
- Land Use:** Highly productive hay meadow and excellent after grazing. Excellent site for future development.
- Water:** There is a drilled & cased stock well set up to take a solar pump or submersible pump.
- Price:** \$288,000.00
- Comments:** This is a good piece of hay meadow with excellent access on a county blacktop road within 5 minutes of North Platte. There could be several nice home sites on this property if you wanted to develop it down the road.
- Contact:** **Mike Polk, Listing Agent - 308-539-4446 or email at [mike@agriaffiliates.com](mailto:mike@agriaffiliates.com)**  
Loren Johnson, Jerry Sloan, Duane McClain, Bruce Dodson, Jerry Weaver, Roger Leuhrs

*Offered Exclusively By:*



## AGRI AFFILIATES, INC.

*...Providing Farm - Ranch Real Estate Services...*

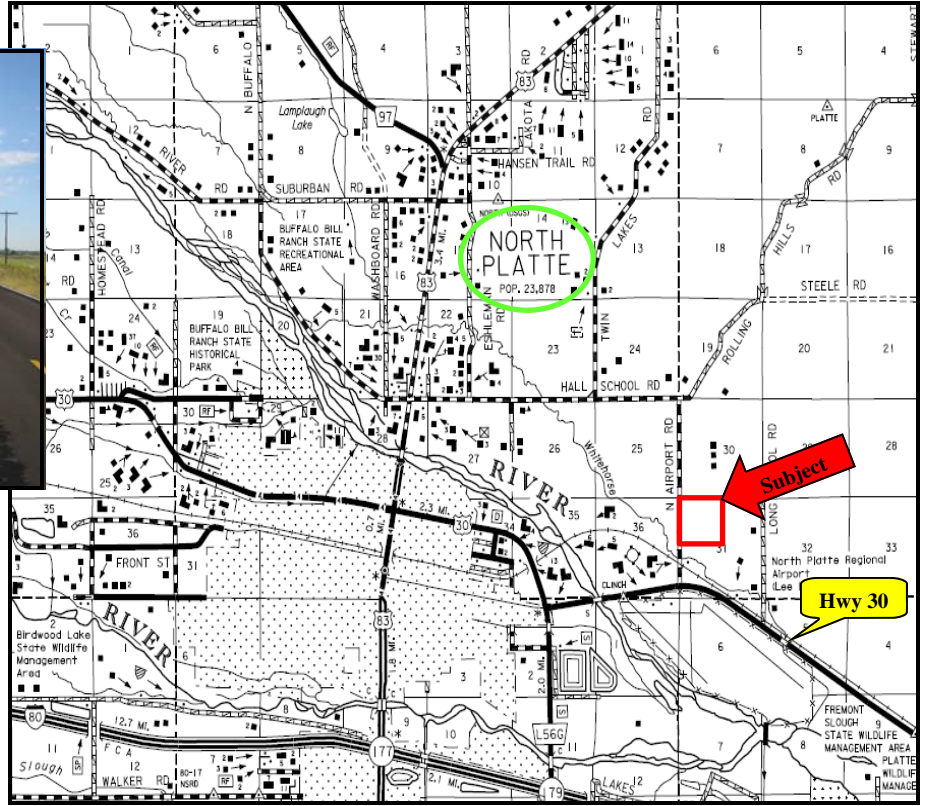
**NORTH PLATTE OFFICE**  
P.O. Box 1166  
I-80 & US Hwy 83  
North Platte, NE 69103  
[www.agriaffiliates.com](http://www.agriaffiliates.com)

**(308) 534-9240**  
Telecopier (308) 534-9244

Information contained herein was obtained from sources deemed reliable. We have no reason to doubt the accuracy, but we do not guarantee it. Prospective Buyers should verify all information, including items of income and expense. All maps provided by Agri Affiliates, Inc. are approximations only, to be used as a general guideline, and not intended as survey accurate.



Great access off of North Airport Road



Cased well for submersible or solar pump



**AGRI AFFILIATES, INC.**  
*... Providing Farm - Ranch Real Estate Services. ...*

All maps provided by Agri Affiliates, Inc. are approximations only, to be used as a general guideline, and not intended as survey accurate.