

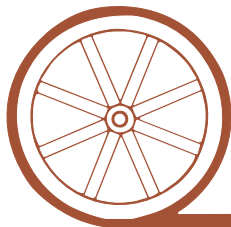
LAND FOR SALE



Lisco Farrowing Unit

- Location:** 3 miles southeast of Lisco, Nebraska on US 26.
- Legal Description:** That part of the NW1/4 Section 6 north of US 26 and NE 92 R.O.W. T17N-R45W, Garden County, NE.
- Acres:** 94.88 taxed acres
- Taxes:** 2008 Real Estate tax payable in 2009 - \$6,919.22
- Land Use:** Considered a 700 sow Isowean farrowing facility located 3 miles east from Lisco, NE, on US 26 or 11 miles west of Oshkosh, NE on US 26.
- Price:** \$500,000
- Comments:** A modern farrow to wean facility located in an isolated area with no close swine production. Adjacent to a paved US Highway. Excellent condition and ready to go. Support buildings are in fair to excellent condition.
- Contact:** **Loren Johnson - Listing Agent, 308-539-4452**
Mike Polk, Bruce Dodson, Duane McClain, Jerry Weaver, Jerry Sloan 308-534-9240

Offered Exclusively By:



AGRI AFFILIATES, INC.

...Providing Farm - Ranch Real Estate Services...

NORTH PLATTE OFFICE

P.O. Box 1166

I-80 & US Hwy 83

North Platte, NE 69103

www.agriaffiliates.com

(308) 534-9240

Telecopier (308) 534-9244

Information contained herein was obtained from sources deemed reliable. We have no reason to doubt the accuracy, but we do not guarantee it. Prospective Buyers should verify all information, including items of income and expense. All maps provided by Agri Affiliates, Inc. are approximations only, to be used as a general guideline, and not intended as survey accurate.

Facilities

Built in 1997 and 1998, perched on a hillside for excellent drainage to a lagoon with all permits in place. The 24 acres of farmland has been accepted in the USDA-EQIP program till 2019. Isolated from other swine production. Property has been vacated and steam cleaned ready for you to move in. Property includes the following:



Farrow Unit:

8,320 square foot D pole construction — 112 crates, Isowean system, mesh flooring, pits, office, Hotsy steam clean.

Gestation Unit:

8,325 square foot steel construction— pens, slats, pits, cablevey feed system with regulators.



Breeding Units (2):

5,492 square foot D pole and steel construction — pens, crates, slats, pits.

Loading:

1,680 square foot frame construction, pens, electronic scale.



Grain Storage: Older, operational 15,000 bushel, dump pit, leg, scale, round bin storage.



Lagoon: Built to handle 785 head, 5 million gallon, NE permit #75272, permit maximum of 1,540 head of swine or 314 animal units

Water: Provided by 2 submersible pumps manifolded into one pressure system.

Home: 1,447 square foot, 3 bedroom in good condition.

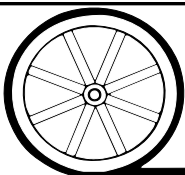
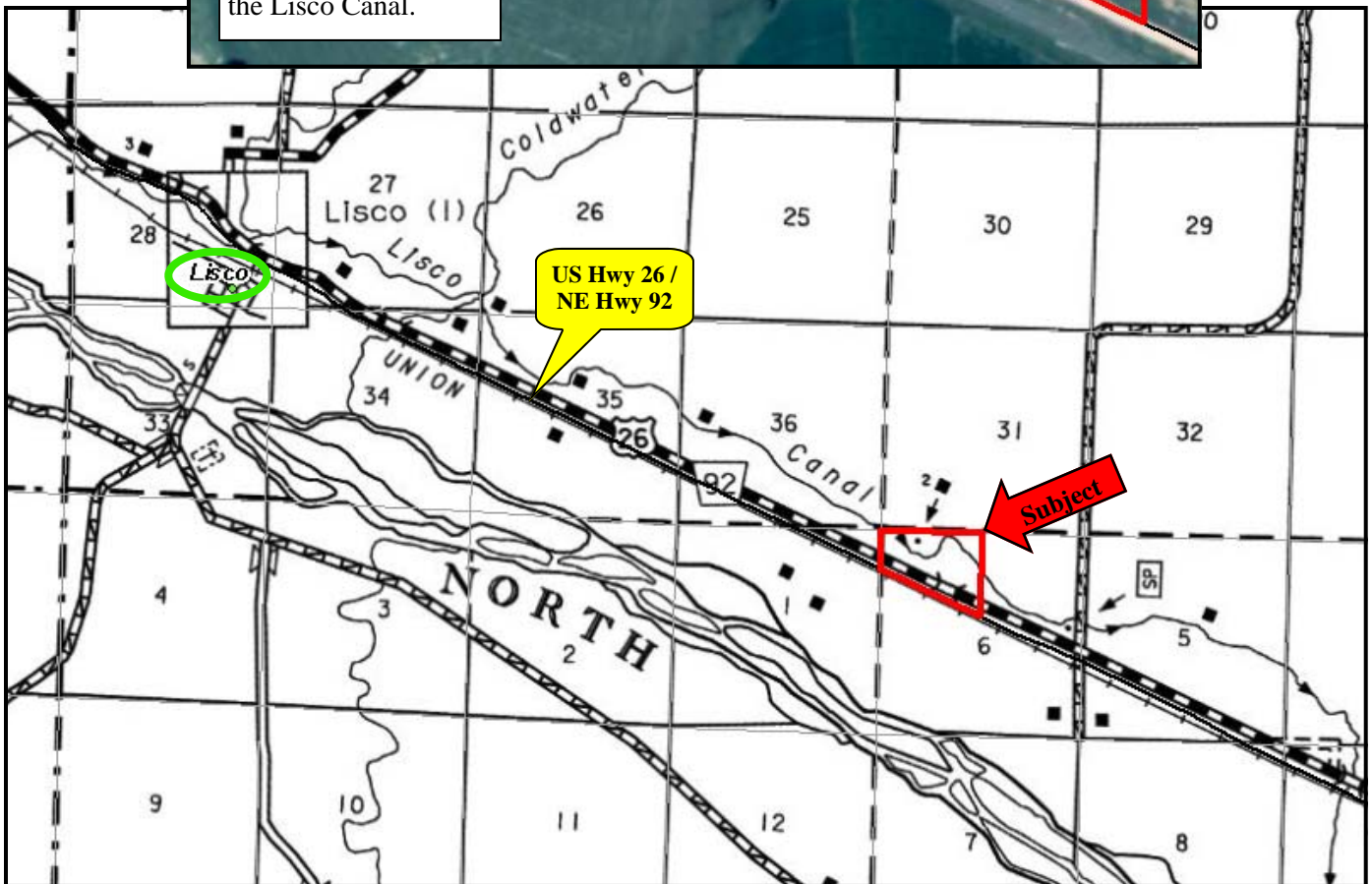
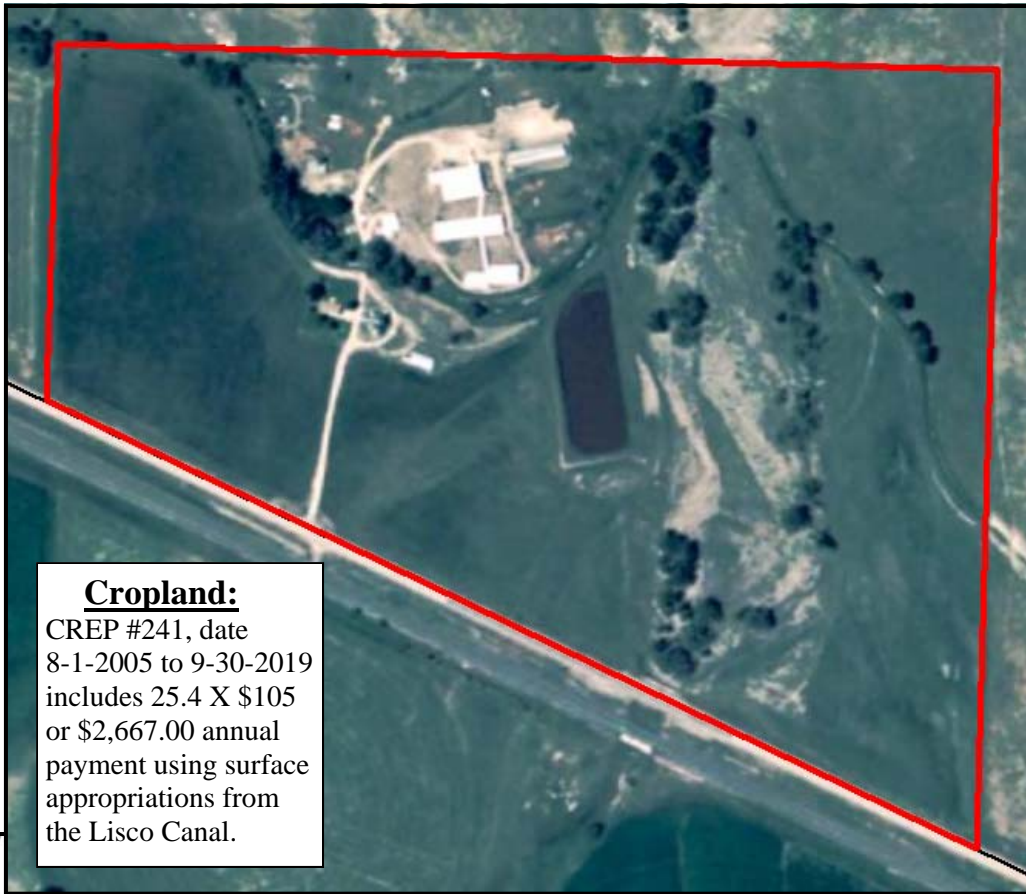


Home #2: 1,708 square foot for hired help.

Shop: 1,290 square foot older building.

Standby Generator Set: Located in separate building on property.





AGRI AFFILIATES, INC.

... Providing Farm - Ranch Real Estate Services. ...

All maps provided by Agri Affiliates, Inc. are approximations only, to be used as a general guideline, and not intended as survey accurate.