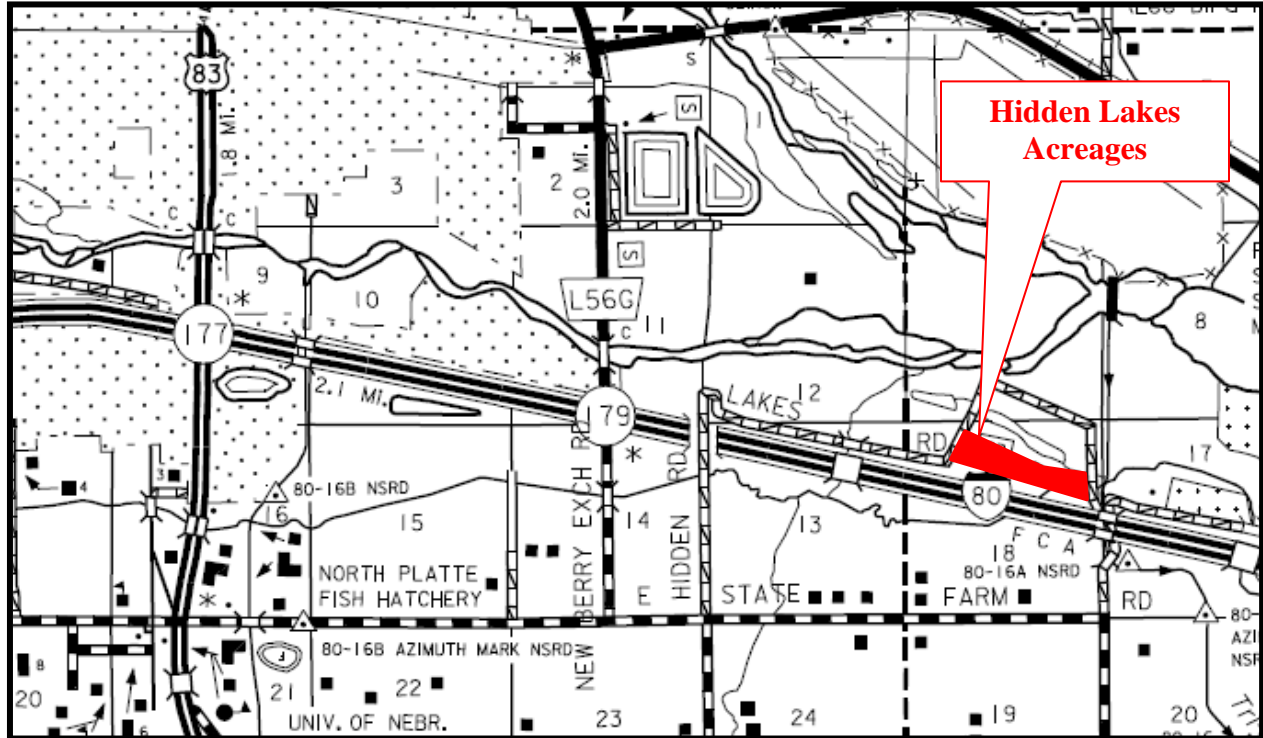


Location Map

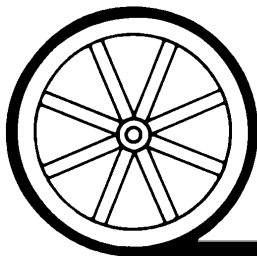


Comments:

This is what everybody with horses is looking for, land to build on. Located on county gravel road, less than 10 minutes from the center of town. Property is currently offered in 4 parcels of 17 to 21 acres. Seller is not locked into a survey and would entertain parcels of a larger size or you can just buy it all.

Contact:

Duane McClain, Listing agent – 308.530.0221 or duane@agriaffiliates.com
Mike Polk, Loren Johnson, Bruce Dodson or Jerry Weaver



AGRI AFFILIATES, INC.

...Providing Farm - Ranch Real Estate Services...