

LAND FOR SALE

Garden County
Commodities

SOLD

Location:

13 miles south of Rossh, NE
on Highway 27 and then
5 miles east on County Road
32

View our **Current Listings**
[HERE!](#)

Legal Description:

S1/2, Section 34-115N-R43W
of the 6th P.M.

Acres:

320 tax assessed acres

Taxes:

2009 taxes due in 2010 -
\$2,149.78

Land Use:

100.1 acres center pivot irrigated and 221 acres dryland. Pivot is presently in alfalfa and dryland was planted to millet.

FSA Info:

Farm #2247, Tract 2363 and Farm #2090, Tract 2282.— 236.1 acre Corn base at 122 Bu. Yield.

Water:

NE Well Reg. #G-121644 Well Reworked October 2009, Static 210', Pumping Level 275', Set to Pump 400 G.P.M.

Soils:

80.0% Class I or II Keith & Duroc loams, 20% Class IV soils.

Improvements & Equipment:

2002 Zimmatic Pivot, Isuzu Diesel engine, gearhead, pump and fuel tank, new bowls installed in pump and reconditioned gearhead in October 2009. New pressure regulators on pivot drops in January 2010.

Price:

\$425,000.00

Comments:

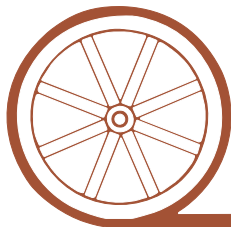
This is an excellent piece of ground with seven-year-old irrigation equipment and excellent access. **There is also a natural gas storage cavern lease on 1 acre in the southwest corner that pays the landowner \$2,900 per year.** Buyer to receive 100% of Seller owned oil, gas and mineral rights with drilling activity throughout the area.

Contact:

Mike Polk, Listing Agent: 308-534-9240, email: mike@agriaffiliates.com

Loren Johnson, Bruce Dodson, Jerry Weaver, Dallas Dodson, Jerry Sloan or Duane McClain

Offered Exclusively By:



AGRI AFFILIATES, INC.

...Providing Farm - Ranch Real Estate Services...

NORTH PLATTE OFFICE

P.O. Box 1166

I-80 & US Hwy 83

North Platte, NE 69103

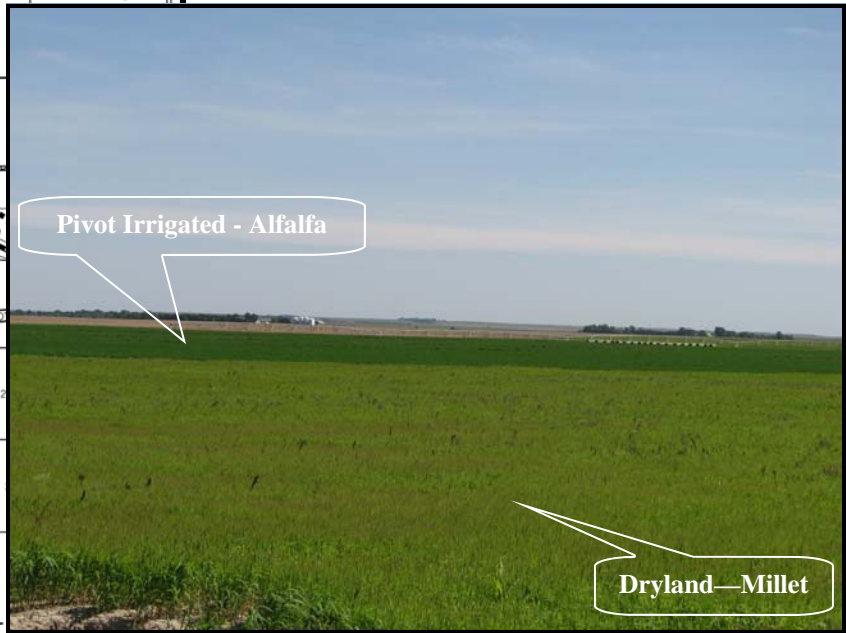
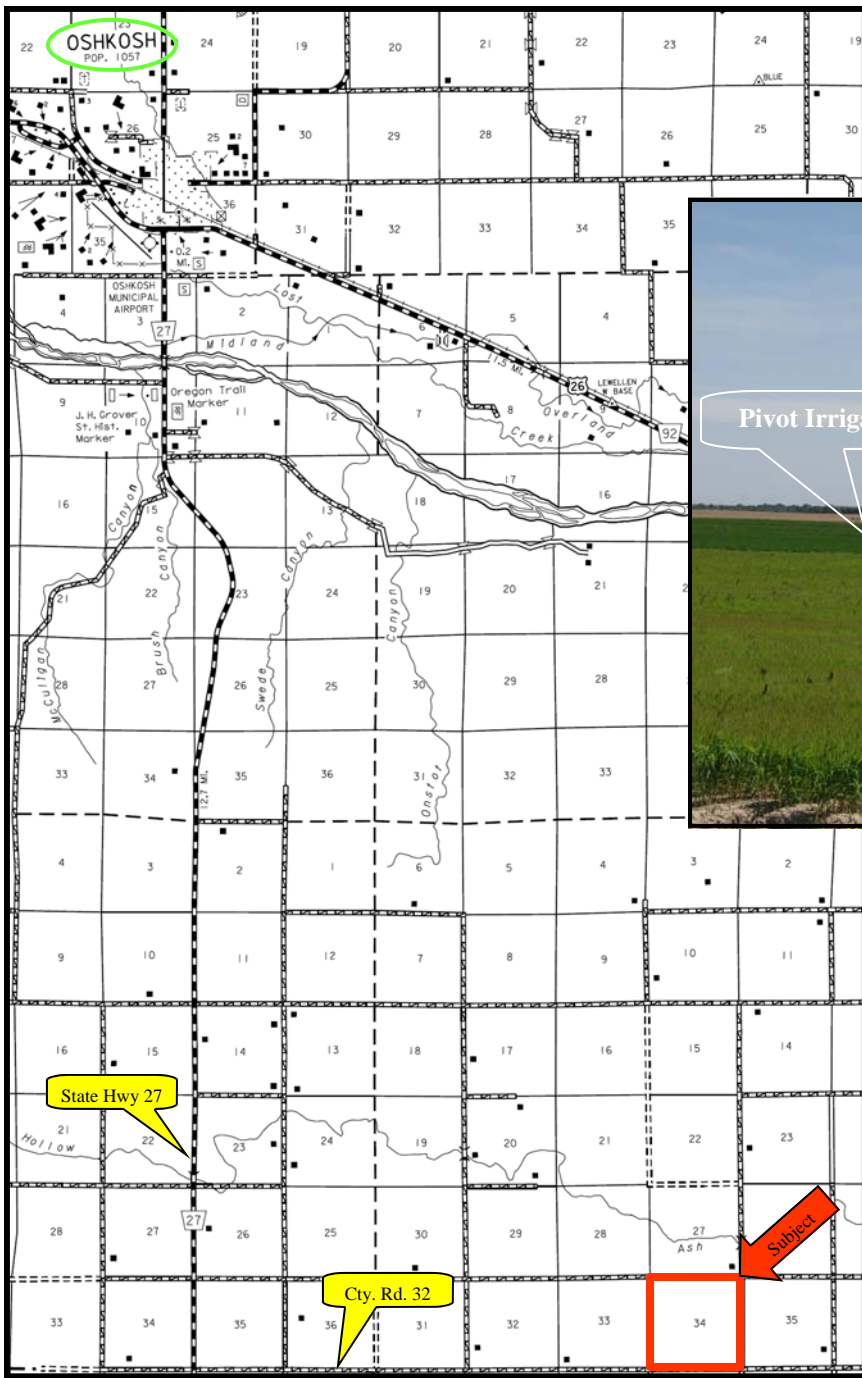
www.agriaffiliates.com

(308) 534-9240

Telecopier (308) 534-9244

Information contained herein was obtained from sources deemed reliable. We have no reason to doubt the accuracy, but we do not guarantee it. Prospective Buyers should verify all information, including items of income and expense. All maps provided by Agri Affiliates, Inc. are approximations only, to be used as a general guideline, and not intended as survey accurate.





All maps provided by Agri Affiliates, Inc. are approximations only, to be used as a general guideline, and not intended as survey accurate.

AGRI AFFILIATES, INC.
... Providing Farm - Ranch Real Estate Services. . .

