

LAND FOR SALE

Binegar Pasture



Location:

16 miles North of US Hwy 30 from Sutherland, Nebraska on paved Prairie Trace Road.

Legal Description:

All Section 1 except tracts—T16N-R34W; All Section 6-T16N-R33W of the 6th P.M., Lincoln County, NE and All Section 32 except an 80 acre tract in the NW1/4-T17N-R33W of the 6th P.M., McPherson County, NE.

Acres:

1,790 Taxed Acres

Taxes:

2010 real estate taxes payable in 2011, \$7,902.79

Land Use:

All Sandhills rangeland.

Water:

Stock water provided by 3 windmills with tanks. A small set of corrals is located in the northwest corner of Section 6.

Price:

\$800,000 Cash (\$447 per acre)

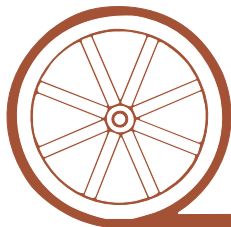
Comments:

Excellent summer pasture north of Sutherland or southwest of Tryon or southeast of Arthur, Nebraska. Access from county paved road in Lincoln County. Only 12 miles south of NE Hwy 92 on Tin Camp Road. **Note: A 200 foot wide strip on the north and east boundary of Section 1 is owned by a third party.**

Contact:

Loren Johnson - Listing Agent, 308-539-4452 or email at loren@agriaffiliates.com
Mike Polk, Bruce Dodson, Jerry Weaver, Dallas Dodson, Roger Luehrs

Offered Exclusively By:



AGRI AFFILIATES, INC.

...Providing Farm - Ranch Real Estate Services...

NORTH PLATTE OFFICE

P.O. Box 1166

I-80 & US Hwy 83

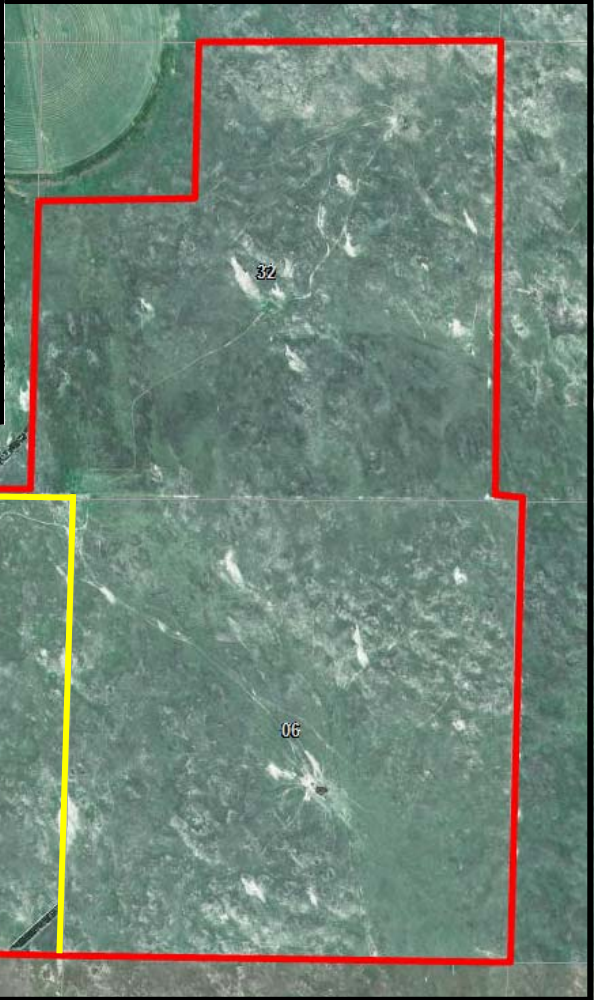
North Platte, NE 69103

www.agriaffiliates.com

(308) 534-9240

Telecopier (308) 534-9244

Information contained herein was obtained from sources deemed reliable. We have no reason to doubt the accuracy, but we do not guarantee it. Prospective Buyers should verify all information, including items of income and expense. All maps provided by Agri Affiliates, Inc. are approximations only, to be used as a general guideline, and not intended as survey accurate.



All maps provided by Agri Affiliates, Inc. are approximations only, to be used as a general guideline, and not intended as survey accurate.